

# SIGNATURE

## NORTH EAST

OFFICIALLY RATED THE NO.1 ESTATE AGENT IN THE NORTH EAST





📍 Ulgham Village Main Road, Morpeth NE61 3AW

# Ulgham Village Main Road, Morpeth NE61 3AW

**Asking Price**  
**£685,000**

We are delighted to welcome this superb four-bedroom detached dormer bungalow to the market, located in the sought-after semi-rural village of Ulgham. The property enjoys a peaceful setting, perfectly balancing countryside living with convenient access to Morpeth and its wide range of amenities. The area benefits from excellent transport links, including easy access to the A1 and Morpeth railway station with direct services to Newcastle and beyond, making it ideal for commuters. Residents also benefit from well-regarded schools, local services, a strong community feel, and close proximity to open countryside, walking routes and the Northumberland coastline, offering an enviable lifestyle of space, tranquillity and connectivity.

On entering the home, you are welcomed into a central hallway with fitted storage units, creating a practical and characterful boot room area. The spacious living room offers ample space for a range of furnishings and features a statement fireplace at its heart, with folding doors opening into the kitchen to create a semi open-plan feel. The kitchen, extended in 2024, provides an abundance of space with attractive fitted units and wooden worktops, comfortably accommodating a large dining table. It benefits from integrated appliances including a gas Rangemaster, fridge and dishwasher, along with a charming window seat overlooking the garden and a dual aspect log burner connecting through to the garden room. A large utility room with fitted units adds further practicality. The garden room is flooded with natural light, featuring bi-fold doors onto the garden and a skylight, offering the perfect space for relaxed indoor-outdoor living. From here, folding doors lead to bedroom three, one of two ground floor double bedrooms, both well-proportioned with space for furnishings. A large family bathroom completes the ground floor, comprising a bath, separate shower, W.C and hand basin, along with an additional reception room currently used as a snug.

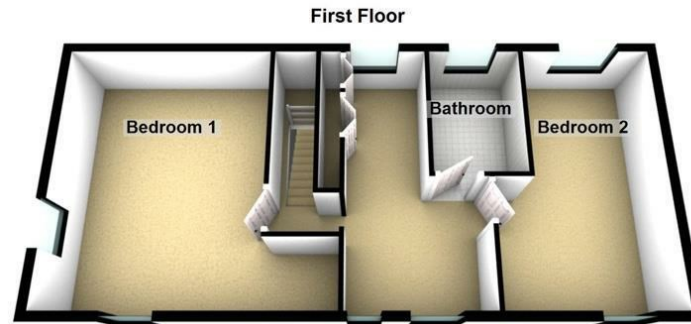
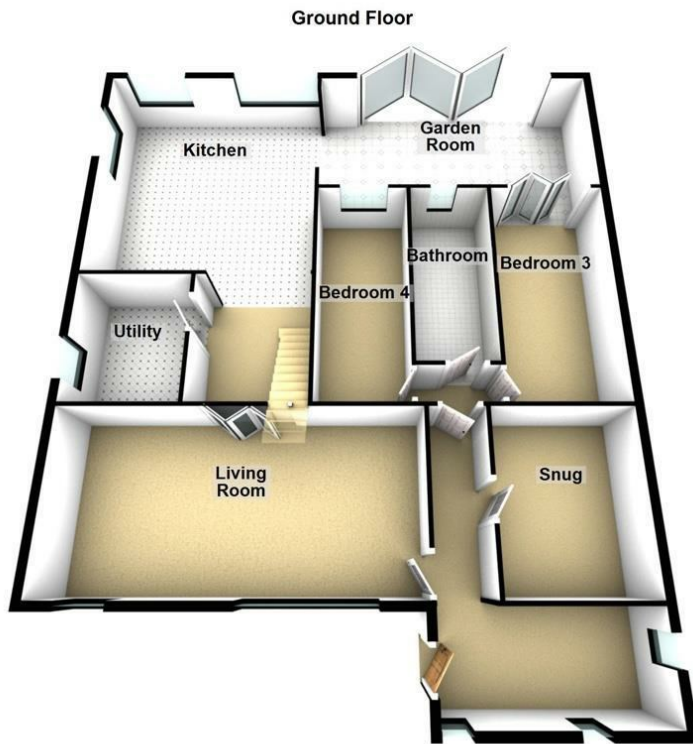
To the first floor, there are two generously sized bedrooms, each easily accommodating a double bed along with additional furnishings. Built-in storage units can be found on the landing between the bedrooms, adding further convenience. This floor is served by a well-appointed bathroom featuring a bathtub, hand basin and W.C.

Externally, the property boasts a large, well-maintained rear garden laid mainly to lawn with a generous patio area, ideal for outdoor dining and seating. A summerhouse provides the perfect retreat to unwind after enjoying the garden. The home also benefits from ample off-street parking via a private enclosed front driveway, while a large garage is located within the rear garden, offering excellent storage or workshop potential.



PLEASE NOTE THAT THE VENDOR HAS CERTIFIED THE PROPERTY INFORMATION AND IMAGES.

# PROPERTY FLOORPLAN



Total area: approx. 230.3 sq. metres (2479.1 sq. feet)

## Measurements:

Living Room  
12'0" x 25'5"

Snug  
12'1" x 9'11"

Kitchen  
18'6" x 17'5"

Utility  
10'0" x 7'7"

Garden Room  
10'10" x 22'3"

Bedroom One  
17'9" x 13'10"

Bedroom Two  
17'9" x 10'8"

Bathroom  
14'8" x 6'0"

Bedroom Three  
17'8" x 8'7"

Bedroom Four  
17'9" x 6'11"

Bathroom  
8'8" x 6'0"





More 5 Star Customer Reviews than any other Agent based in the North East on allAgents.co.uk



**SALES**

**LETTINGS**

**FINANCE**

**LAW**

**WE COVER THE WHOLE OF THE NORTH EAST**

Whitley Bay  
0191 251 3344

Cramlington  
01670 897 213

Tynemouth  
0191 296 6689

Morpeth  
01670 513 966

Ponteland  
01661 820 082

Wallsend  
0191 432 4151

Alnwick  
01665 511 800

Heaton  
0191 432 4275

Forest Hall  
0191 266 9966

Other locations  
0191 640 3523

Newcastle  
0191 640 2284

Durham  
0191 303 8252

Gosforth  
0191 640 3523

Sunderland  
0191 543 6390

Whickham  
0191 432 5102

Gateshead  
0191 432 4294

Jesmond  
0191 281 1037

Killingworth  
0191 640 3602

Ryton  
0191 413 9845

Head Office &  
Lettings  
0191 253 4815

\*Highest recommended 5-star reviews than any other Estate Agent based in the North East on allAgents.co.uk - The UK's Largest Customer Review Website for the Property Industry & Awarded Best Estate Agency 2018 & 2019 - North East England by SME News