

SIGNATURE

NORTH EAST

OFFICIALLY RATED THE NO.1 ESTATE AGENT IN THE NORTH EAST





 Gibson Street, Newbiggin-By-The-Sea NE64 6UT

Gibson Street, Newbiggin-By-The-Sea NE64 6UT

Asking Price
£300,000

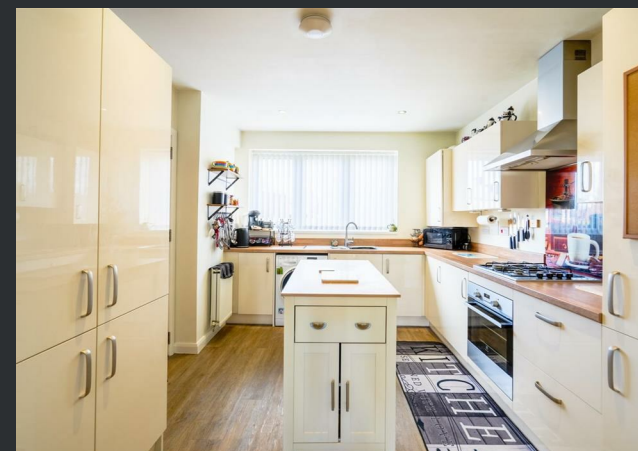
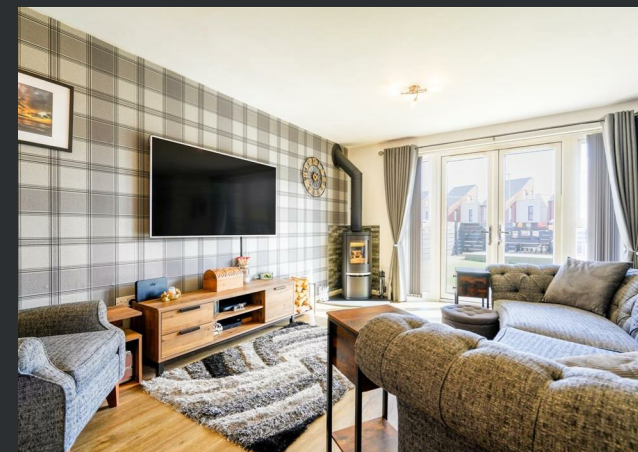
Signature North East are delighted to welcome to the market this three bedroom semi-detached house, situated just 250m from the beach.

Residents can enjoy a beautiful sweeping bay, newly improved promenade, and the iconic 'Couple' sculpture by Sean Henry. The town offers a peaceful yet active community with a range of amenities including the Newbiggin Maritime Centre, a local sailing club, pubs and cafés. It is also well located for access to Ashington and Newcastle, making it ideal for commuters seeking coastal living.

Upon entering the property, you are welcomed into a hallway providing access to a convenient downstairs WC, the main living room and the kitchen. The spacious living room features a modern corner log burner and offers ample space for a range of furnishings, with French doors opening out to the rear garden. Double doors lead seamlessly into the open plan kitchen, which boasts a central island, attractive wall and base units, and integrated appliances including fridge freezer, washing machine, hob and oven.

To the first floor, the property offers two generously sized double bedrooms and a single bedroom, all providing space for additional furnishings. Bedrooms one and two benefit from fitted wardrobes, while bedroom one further enjoys the luxury of an en-suite shower room comprising a modern walk-in shower, hand basin and WC. The family bathroom is fitted with a bath with overhead shower, hand basin and WC, finished to a contemporary standard.

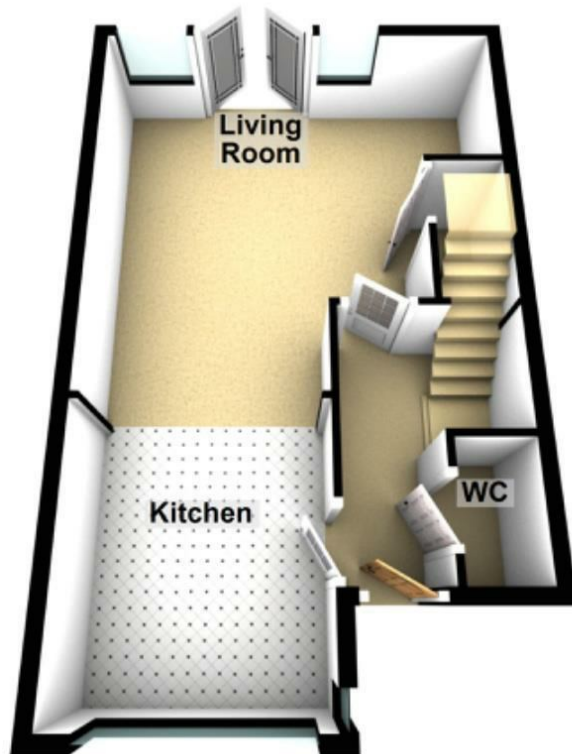
Externally, the property benefits from two dedicated off-street parking spaces to the rear, with convenient access via the rear garden. The rear garden features a patio seating area, lawn and decking space, ideal for entertaining.



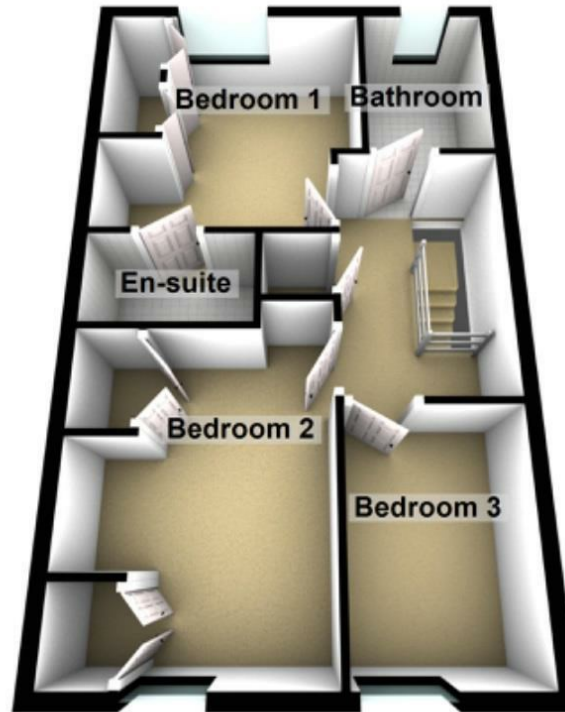
PLEASE NOTE THAT THE VENDOR HAS CERTIFIED THE PROPERTY INFORMATION AND IMAGES.

PROPERTY FLOORPLAN

Ground Floor



First Floor



Total area: approx. 93.8 sq. metres (1009.7 sq. feet)

Measurements:

Living Room
17'4" x 6'6"

Kitchen
11'8" x 10'2"

WC
5'9" x 3'1"

Bedroom One
11'8" x 11'11"


Bedroom Two
14'6" x 7'7"

Bedroom Three
10'1" x 7'1"

Bathroom
7'7" x 5'8"

En Suite
4'1" x 7'2"

Energy Efficiency Rating

	Current	Potential
<i>Very energy efficient - lower running costs</i>		
(92 plus) A		95
(81-91) B	84	
(69-80) C		
(55-68) D		
(39-54) E		
(21-38) F		
(1-20) G		
<i>Not energy efficient - higher running costs</i>		
England & Wales	EU Directive 2002/91/EC 	





More 5 Star Customer Reviews than any other Agent based in the North East on allAgents.co.uk



SALES

LETTINGS

FINANCE

LAW

WE COVER THE WHOLE OF THE NORTH EAST

Whitley Bay
0191 251 3344

Cramlington
01670 897 213

Tynemouth
0191 296 6689

Morpeth
01670 513 966

Ponteland
01661 820 082

Wallsend
0191 432 4151

Alnwick
01665 511 800

Heaton
0191 432 4275

Forest Hall
0191 266 9966

Other locations
0191 640 3523

Newcastle
0191 640 2284

Durham
0191 303 8252

Gosforth
0191 640 3523

Sunderland
0191 543 6390

Whickham
0191 432 5102

Gateshead
0191 432 4294

Jesmond
0191 281 1037

Killingworth
0191 640 3602

Ryton
0191 413 9845

Head Office &
Lettings
0191 253 4815

*Highest recommended 5-star reviews than any other Estate Agent based in the North East on allAgents.co.uk - The UK's Largest Customer Review Website for the Property Industry & Awarded Best Estate Agency 2018 & 2019 - North East England by SME News